

2007

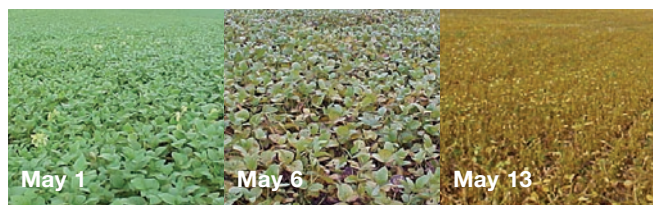
HEADLINE on soybeans technology sheet



The risk of disease in 2007

Experts agree that recent weather conditions have aligned to create a growing season with high disease potential. Last year's warm, wet fall and this winter's mild start elevated the disease risk. If the long-range forecast for a moist cool spring comes true, we could see much more disease than normal.

You could take a wait-and-see approach, relying on early detection and rapid response to control disease. Or you could take a preventative approach, protecting the crop before disease symptoms appear. In either case, vigilance is critical to protect your yields. And, because no resistant varieties exist, a fungicide registered to protect against Asian soybean rust, like HEADLINE®, should be part of your plan.



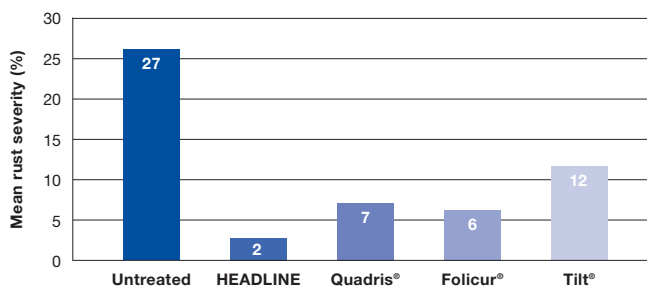
These photos show how quickly soybean rust can devastate an untreated field. (BASF Brazil, 2003)

The South American experience with Asian soybean rust

In South American growing regions, Asian soybean rust has become a fact of life. Generally warmer, wetter conditions favour year-round risk of disease on most legume species. In Brazil, the largest soybean growing region, the number one product in the fight against Asian soybean rust is a BASF fungicide that contains the same strobilurin active ingredient as HEADLINE plus a triazole component. The HEADLINE active ingredient offers long-lasting preventative disease protection while the triazole fungicide controls rust that is already in the field.

The following graph details the control levels that can be achieved with HEADLINE if it is applied preventatively.

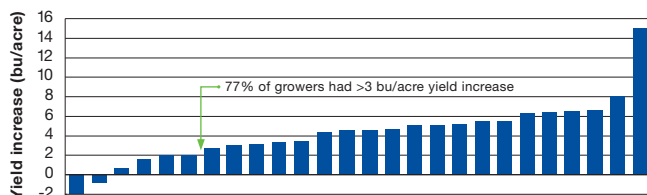
USDA rust trials 2002-2003, Paraguay – 3 locations



HEADLINE increases your yields

In addition to providing control of Asian soybean rust, ongoing BASF field research in Canada has shown that HEADLINE can also protect your soybean crop from a broad spectrum of pathogens, such as frog-eye leaf spot, that can cause significant yield losses in soybeans, giving you maximum yield and higher crop quality. BASF conducted a significant number of field scale research trials in 2005 which showed an average yield increase of 4.4 bu/acre over the check. The following chart shows the yield response individual growers reported when they used HEADLINE.

Yield increase in HEADLINE treated soybeans 2005 (n=26)



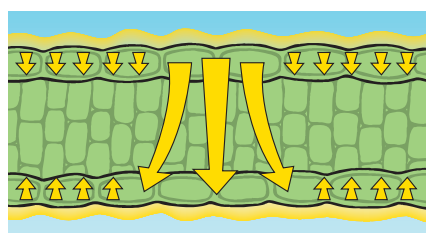
26 locations. Average yield increase 4.4 bu/acre. Grower trials 2005. Based on \$8.10/bu soybean price at time of printing; return per acre = \$35.64.



HEADLINE
F U N G I C I D E

How HEADLINE works

HEADLINE is rainfast within one hour of application. The formulation of HEADLINE in the leaf allows it to bind tightly to the waxy cuticle when applied to the leaf's upper surface. The systemic activity also allows HEADLINE to move through the leaf and bind itself to the leaf's lower surface. This unique activity enables HEADLINE to protect both sides of the leaf regardless of the side it is applied to, delivering dual-sided protection.



Unique activity
HEADLINE provides systemic movement within the leaf.

What HEADLINE controls

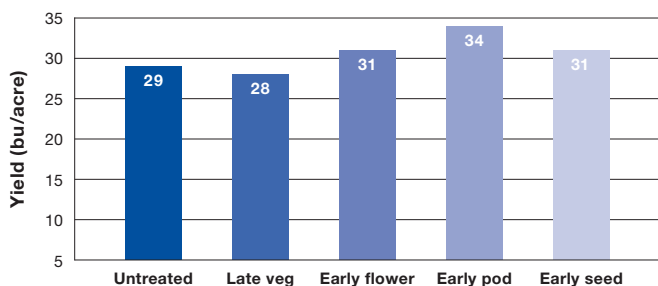
Key Diseases Controlled in Soybeans

Asian soybean rust | Frog-eye leaf spot

HEADLINE timing trials

BASF has conducted a significant number of in-house research trials to determine the best time to apply HEADLINE, under Canadian conditions, to achieve maximum yield in soybeans. The following chart summarizes those findings.

BASF London and Guelph research farms



For more information about HEADLINE, call **AgSolutions**® by BASF at 1-877-371-BASF (2273) or visit our website at www.agsolutions.ca

Always read and follow label directions.

AgSolutions and HEADLINE are registered trademarks of BASF. All other products mentioned are trademarks or registered trademarks of their respective companies. © 2007 BASF Canada Inc.

Canadian research trials indicate that, in the absence of Asian soybean rust, application of HEADLINE at the early pod stage (R2 – R3 growth stage) results in the highest yields. However, it is important to note that disease infection of treated leaves can occur earlier if conditions are favourable for disease development.

How much to apply

Each 6.5 L jug of HEADLINE contains enough fungicide to treat approximately 40 acres.

Application tips

- Apply HEADLINE at a rate of 160 mL/ac.
- Apply HEADLINE with a minimum of 15 imperial gallons of water per acre (150 L/ha) by ground. Results in other crops indicate that increasing water volumes to 20 gal/ac will provide even better results. If applying by air, use 5 imperial gallons of water per acre (50 L/ha).
- Ensure that HEADLINE covers plants completely and penetrates into the canopy.
- Monitor and scout plants after each application.
- If conditions are favourable for further disease development, follow the HEADLINE treatment with an approved fungicide (non-Group 11 or non-QoI mode of action) for resistance management.
- Do not apply HEADLINE more than two times in a growing season in soybeans.



HEADLINE
F U N G I C I D E